

<http://paperartgadgets.blogspot.com>

Designed by SonicScape jun

Custom modelling: These models cannot be found or purchased elsewhere because they are not in production. They are personal works that have been put up for sharing.

These models are not official products of or endorsed by their respective companies who make these electronic gadgets.

These models are not designed for profit of any kind, and represent fan-based art work.

This document is not to be sold, reproduced, copied or distributed without the permission of its creator.

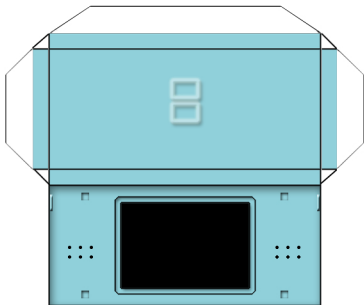
Portions of this material carry trademarks or registered trademarks as stated.

All logos are used with artistic intent, solely for the purpose of recreating lifelikeness.

Should there be any issue arising from the use of trademarks, please do not hesitate to contact.

DISCLAIMER: This model is not an official product of, or endorsed by Nintendo. It is not meant for profit of any kind and represents fan-based art work. It is not to be sold, reproduced, distributed, copied or modified without permission from its creator. This material contains portions which are trademarks or registered trademarks of Nintendo. Nintendo (R), Nintendo DS Lite (R) and Nintendogs (R) are registered trademarks of Nintendo.
All logos are used with artistic intent, solely for the purpose of recreating lifelikeness.
This page is to be printed on 120 - 160 gsm thick paper.

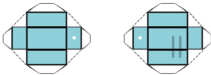
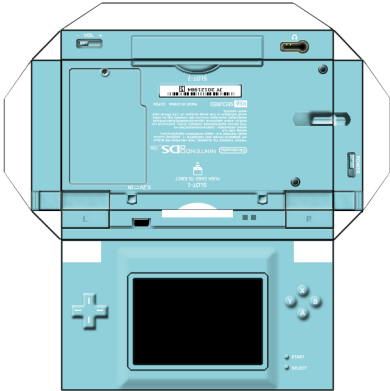
1A: TOP SCREEN



1B: SWIVEL

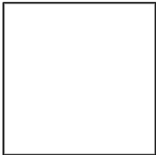


2A: BOTTOM SCREEN



2D: TO HOLD SWIVEL AXLE (TOOTHPICK)

3A: POCKET FOR CARTRIDGE

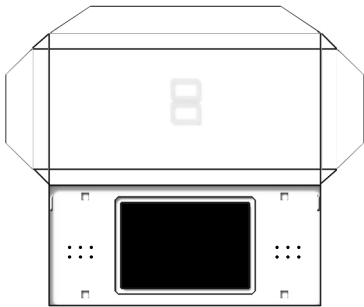


3B: CARTRIDGE 1



DISCLAIMER: This model is not an official product of, or endorsed by Nintendo. It is not meant for profit of any kind and represents fan-based art work. It is not to be sold, reproduced, distributed, copied or modified without permission from its creator. This material contains portions which are trademarks or registered trademarks of Nintendo. Nintendo (R), Nintendo DS Lite (R) and Nintendogs (R) are registered trademarks of Nintendo.
All logos are used with artistic intent, solely for the purpose of recreating lifelikeness.
This page is to be printed on 120 - 160 gsm thick paper.

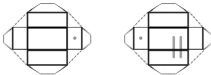
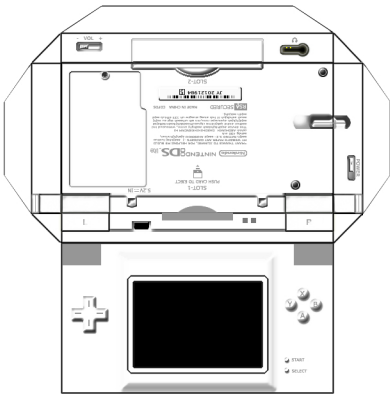
1A: TOP SCREEN



1B: SWIVEL

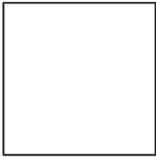


2A: BOTTOM SCREEN



2D: TO HOLD SWIVEL AXLE (TOOTHPICK)

3A: POCKET FOR CARTRIDGE



3B: CARTRIDGE 1



Instructions:

1) You need to get a few simple materials, shouldn't cost you more than 5 bucks. Most of it you will probably have in your place anyways.

- Paper cutter
- Scissors
- Metal ruler
- Art glue (please get good quality art glue not the lousy type that doesn't hold anything)
- Board for cutting stuff on (I use the back of exam pads)
- Toothpick (preferably round ones, not those flat ones)
- Black permanent marker (medium sized tip)
- Silver metallic marker

2) Pay a visit to a local print shop, if possible

- Where I stay, it's 2 hours drive across the breadth of the nation, so I won't take it for granted that all of you have access to a print shop.
- I'm not sure what they have over there in the States, or wherever you are from, but what I do is that I take it to these little shops that have laser printers from Xerox set up to cater to smaller scale professional requests
- You need to print the paper on either 250 gsm paper or 160 gsm paper, depending on what I left on the header of the page
- If you really cannot, you can print it on normal paper, but the model will not look or feel good ;)
- I suggest printing at least 2 copies of each of the pages of the file, because there are bound to be screw ups, and we wouldn't want having to rush back to the shop to get more model parts printed.

Making the model:

You need to know 2 basic skills which will be helpful:

1) Scoring

- This is basically making a superficial cut on the paper using the paper cutter, so that the edges turn out crisp after you fold.

2) Applying glue

- This should be done sparingly, and this is where the tooth picks come in handy
- After applying glue, hold the pieces together firmly for some time. Patience matters.
- Remember to wipe off any glue that gets onto your hands! even the slightest bit. If not, it will stain your model and the glue turns black as dirt gets stuck onto it.

Piecing the parts together:

I included two versions, one blue and one white for the NDS Lites. The white version can be printed on coloured paper of your choice.

1) Cut out 1A and assemble it. This forms the top screen.

2) Cut out 2A as well as the white area on the back meant for the cartridge. This forms the bottom screen. Cut out 3A and shape it into a little pocket by sticking its sides down on the inside of 2A. This is to prevent the cartridge from falling into 2A when you insert it.

3) Cut out 2D and assemble them into two tiny cubes. Make cuts in the shape of an X onto the walls the white circle. Fit a rounded toothpick in between these two blocks to form an axle. Then stick this whole structure down onto 2A.

4) Cut out the swivel 1B, wrap this around the axel you made in step 3. Fold the white tabs on 1B and attach the top screen made from 1A onto the swivel.

5) Assemble the cartridge by sticking parts of 3B back to back.

You're done!